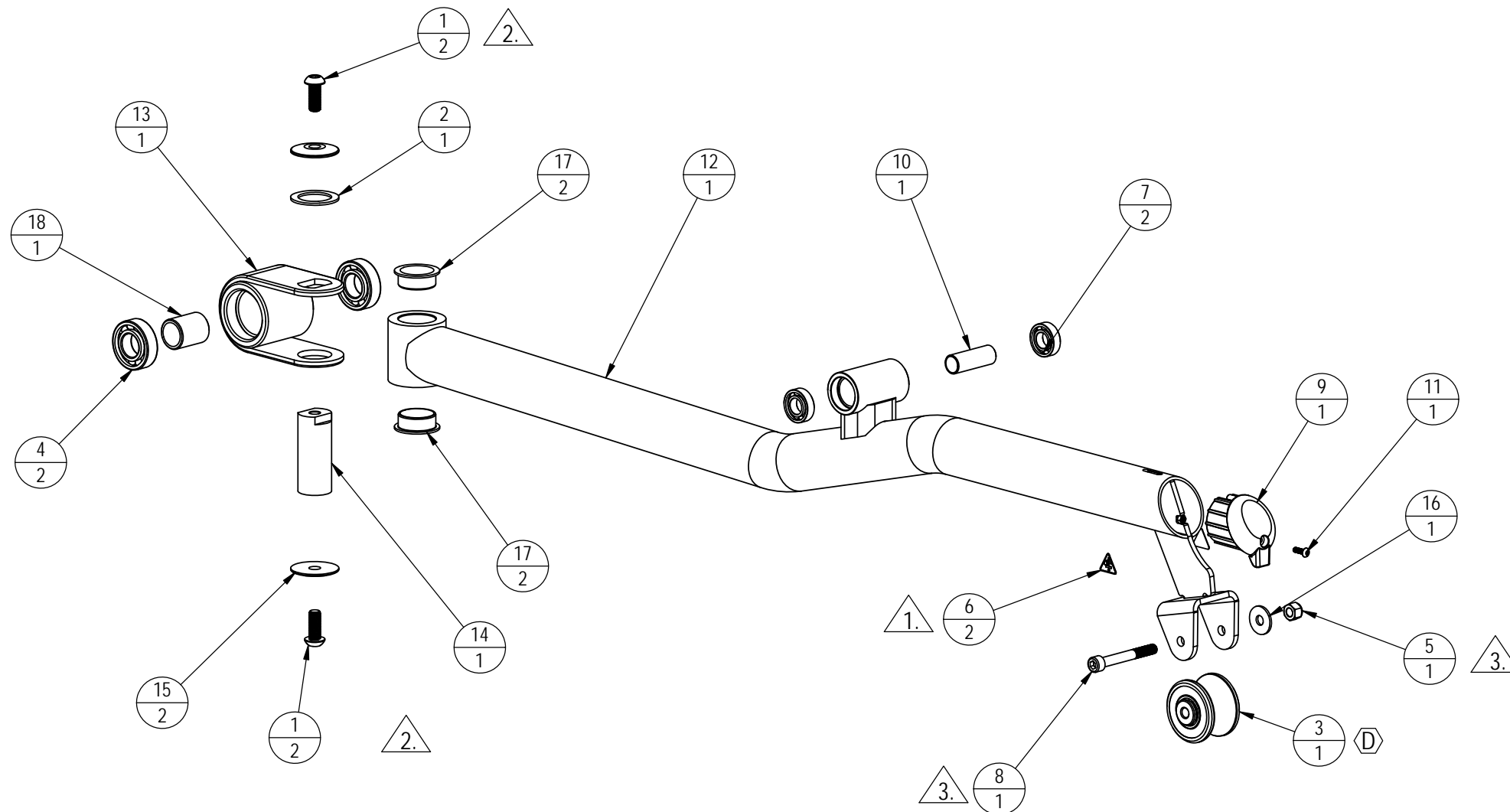


NOTES:

1. CLEAN SURFACE WITH DENATURED ALCOHOL PRIOR TO ADHERING LABEL
2. TORQUE TO 41-43 LB-FT/ 55.5-58 N-m
3. TORQUE TO 19-21 LB-FT/ 25.5-28.5 N-m
4. COLOR PER -XX AS SPECIFIED IN PARENT SKU, -XX COLOR PER SOP 622-200-112 D
5. PACKAGING FOR SPARE PARTS:
  - a. PO NUMBER AND DATE ASSEMBLY NUMBER
  - b. BAR CODE OF ASSEMBLY NUMBER (CODE 128)
  - c. ASSEMBLY DESCRIPTION
  - d. ASSEMBLY REVISION
  - e. WEIGHT (LBS/KGS)

REVISION HISTORY

REV	DATE	DESCRIPTION	ECO	BY
A	8/23/2013	PRODUCTION RELEASE; ADD <span style="color: green;">731-0512</span> (2) AND NOTE 1	14209	SS
B	9/12/2013	DOCUMENT RELEASE	14377	VC
C	8/29/2014	REMOVE <span style="color: green;">731-0399</span> (2), ADD <span style="color: green;">110-3621</span> (2), <span style="color: green;">120-3364</span> (1), AND NOTE 5.	14771	JO
D	11/30/2017	ADDED: <span style="color: green;">721-1496</span> (1); REMOVED: <span style="color: green;">740-8505</span> CHANGED NOTE #2	15848	ZDH



ITEM NO.	PART NUMBER	DESCRIPTION	Default/ QTY.
1	<span style="color: green;">110-3621</span>	SCREW, M12x1.25, 30mm, BHC, HK, SS	2
2	<span style="color: green;">120-3364</span>	WASHER, PLASTIC, NYLON, 35ID, 50OD	1
3	<span style="color: green;">721-1496</span>	ASSY, WHEEL, CT ROLLER	1
4	<span style="color: green;">731-0137</span>	BEARING, 52 OD, 25 ID, X 15MM	2
5	<span style="color: green;">731-0363</span>	NUT, M10X1.5, NYLOC	1
6	<span style="color: green;">731-0512</span>	STICKER, WARNING, PINCH	2
7	<span style="color: green;">731-0824</span>	RADIAL BEARING, 17 ID X 35 ODX 10MM	2
8	<span style="color: green;">731-2894</span>	Screw, M10x1.5, 80mm, SHC, HK, CS, NKL	1
9	731-2910	ENDCAP, TUBE, LOWER RAIL, TBT	1
10	<span style="color: green;">740-4095</span>	SPACER, 17.5 ID X 20 ODX 55MM	1
11	<span style="color: green;">740-7183</span>	Screw, M5x0.8, 16mm, BHC, HK, SS	1
12	<span style="color: green;">740-7744-XX</span>	WELDMENT, BEAM, LEG, E-CT	1
13	<span style="color: green;">740-7794-XX</span>	WELDMENT, PIVOT, BEAM, LEG, E-CT	1
14	<span style="color: green;">740-7802</span>	SLEEVE, BEARING, BEAM, LEG, E-CT	1
15	<span style="color: green;">740-7826-XX</span>	CAP, END, DOME, BEAM, LEG, E-CT	2
16	<span style="color: green;">740-7846</span>	Washer, M10, Ø10.5xØ30x2.5mm, CS, NKL	1
17	<span style="color: green;">740-7895</span>	JFM-3539-16 BEARING, FLANGE, IGUS	2
18	740-7950	SPACER, 25.2ID X 32OD X 40MM	1

DOCUMENT STATUS:

NOTICE OF PROPRIETARY INFORMATION

THIS DOCUMENT SHALL NOT BE REPRODUCED NOR SHALL THE INFORMATION CONTAINED HEREIN BE USED BY OR DISCLOSED TO OTHER EXCEPT AS EXPRESSLY AUTHORIZED BY CORE HEALTH & FITNESS, LLC.

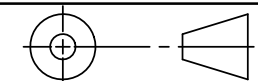
MATERIAL  
SEE BOM

FINISH  
SEE NOTES

VENDOR: **N/A**

P/N: **N/A**

THIRD ANGLE PROJECTION



	INITIAL	DATE
DRAWN	SS	8/23/13
CHECKED		
APPROVED		

**CORE HEALTH & FITNESS, LLC**  
4400 NE 77th Ave., Suite 300  
Vancouver, WA 98662

CORE PART NO. 740-7801-XX REV **D**

TITLE  
ASSY, BEAM, LEG, E-CT

SCALE: 1:6 SHEET 1 OF 1 SHEET SIZE: B